



THAILAND
03 NIGHT PHUKET AND 04 DAYS
NO OF PAX: 50



TRIP NAVIGATOR
PIONEERING CORPORATE TRAVEL & EVENTS

Phuket As A MICE Destination

Visa	Visa Free Country on Arrival (Till April 2020)
Travel	One can visit Thailand all year round. Best time to travel is November to early April.
Climate	Thailand climate is tropical with a mean annual temperature and high humidity. There are three distinct seasons - the hot season from March to May, the cool season from November to February and the rainy season from about June to October.
Language	The sole official language of Thailand is Thai. English is commonly spoken in Thailand, so that tourist can get by easily.
Hotels	Offers you choice International and local chains
Sightseeing	Mix of History, culture., entertainment
Indian Meals	North and South Indian, pure vegetarian and Jain meals are all available at Indian restaurants and the hotels..
Shopping	Good quality shopping with choice of local souvenirs.

VISA Requirements

Documents Needed For Thailand E-Visa:

- Passport cover page.
- Passport bio page.
- Departure and Return Airline tickets.
- Confirmed booking of stay – Hotel stay.
- Photograph size 4x6 cm.
- Passport must be valid for 6 months and minimum 2 blank pages.



Things to do

Phi Phi Island:

- Phi Phi Island is Thailand's island-superstar.
- It's the topic of conversation for traveller's all over Thailand.
- For some, it's the only reason to touchdown in Phuket. Even with all the hype, it doesn't disappoint.
- Phi Phi's beauty is a large chunk of the allure. The islands, when approached by boat, rise from the sea like a fortress.
- Sheer cliffs tower overhead, then give way to beach-fronted jungle. It's love at first sight.



Dolphin show:

- It is the only marine theme park in Phuket, established in 2015 with the cause of spreading proper information regarding the conservation of these animals.
- Want to experience a weekend or weekday holidays do? Come on show in Kharkov Dolphinarium «Nemo».
- Here you can feel like a kid and think, how can truly surprised and scream with delight. Program featuring charming dolphins, white whale, funny fur seals and sea lions.



Phuket FantaSea Show

- Phuket FantaSea Show, or Fantasy of a Kingdom, is a Las Vegas style Thai cultural show infused with cutting edge technology and state-of-the-art show elements.
- The essence of being Thai, everything from the love for freedom and fun, courage and compassion, is being represented in each scene.



Elephant trekking:

- Enjoy elephant trekking at the greatest Big Buddha Safari Camp, located on the highest point in Phuket with fantastic views over Phuket Town, Chalong Bay, Rawai and the Andaman Archipelago.
- Each tour includes watching a baby elephant and the Elephant.
- Elephant trekking is an unforgettable experience and a great activity for kids. A platform will easily bring you into the two passenger seat on the back of the elephant. The tour guide will take you through paths on the high plain.



National Park

- Phuket's parks are oasis of relaxation and if you're a nature lover expect to be surprised by the depth and width of the flora and fauna on show here. It's certainly not like back home!
- Wallowing in an ultra-cool waterfall the very best way to get to grips with the midday tropical heat.
- Phuket also has beachside parks that combine the best of the shade with cooling sea breezes.
- of course don't forget the sensational viewpoints that afford sweeping vistas over this green island.



White Water Rafting:

- White water rafting is offered in Phang Nga Rafting Camp and provides for a thrilling and fun experience on rubber rafts taking 6 people each.
- Rafting and white water rafting are recreational outdoor activities which use an inflatable raft to navigate a river or other body of water.
- This is often done on whitewater or different degrees of rough water.
- After initial instructions and training, the tour guide will lead you down the river through the jungle rain forest on an exciting 5 km ride.



Sightseeing In Phuket

Phang Nga Bay:

- Phang Nga Bay is unique. A day out here is an unforgettable experience that will definitely get you thinking.
- A distinctive feature of the bay is the sheer limestone cliffs that jut vertically out of the emerald-green waters.
- These islands are home to sheltered fauna that are possible to observe on certain tours.
- James Bond Island and Koh Panyee are just 2 of the more famous spots in this bay.

Koh Tup & Koh Mor:

- The popularity of Koh Tup and Koh Mor is due to their specific shape.
- They are linked by a sandbar which also leads to Koh Kai, a third island, at low tide. Apart from this unique walk, and from the excellent snorkelling opportunities, there's not much to do here.
- There's just a short hike to Koh Tup's summit which offers a cool viewpoint to the other islands around.



Sightseeing In Phuket

Phi Phi Island:

- The Phi Phi Islands are Thailand's superstar archipelago, particularly famous for Maya Bay's central role in the 2000 movie *The Beach*.
- It's the topic of conversation for travellers all over Thailand.
- Phi Phi's beauty is a large chunk of the allure. The islands, when approached by boat, rise from the sea like a fortress.



Bangla Road:

- There are few things in this world to prepare you for an after-dark stroll down Patong's Bangla Road.
- The biggest collection of nightclubs, bars, shows and general nocturnal fun in Phuket, it's pretty much an all-out assault on the senses.
- In spite of this, it is still very much one of the essential things to do in Phuket, even if it's just to say that you have.



Sightseeing In Phuket

Big Buddha Phuket:

- Visible from most of the south of Phuket, the Big Buddha sits atop the Nakkerd Hills and looks down over Chalong, Kata and Rawai.
- The drive up to the Big Buddha takes you through some beautiful jungle and the view from the top is enhanced if you take a map to identify the many, many sights.



Similan Island:

- The stunning Similan Islands are surrounded by amazingly clear blue seas and pristine white-sand beaches.
- Heaven for island-hoppers and scuba divers, the 9 islands are about 30 km off the coast of Khaolak.
- They're ranked among the best dive sites in the world for their lively and colourful coral reefs and perfect visibility.



Suggested Itinerary

Day 1:

- Arrival in the Phuket Airport
- Meet and Greet at the Airport
- Phuket city tour
- Lunch at an Indian Restaurant
- Transfer to the Hotel
- Check in at the Hotel
- Time at Leisure
- Evening Fanta Sea Show
- Dinner at an Indian Restaurant
- Transfer back and overnight at hotel



Suggested Itinerary

Day 2:

- Breakfast at the Hotel
- Sightseeing including
 - Full day Phi Phi island by big boat
 - National Park with Snorkeling
- Indian lunch on the island
- Time at leisure
- Dinner at an Indian Restaurant
- Transfer back and overnight at hotel



Suggested Itinerary

Day 3:

- Breakfast at the Hotel
- Full day White water rafting
- Elephant trekking
- Thai lunch
- Transfer back to hotel
- Gala Dinner at an Indian Restaurant
- Transfer back and overnight at hotel



Suggested Itinerary

Day 4:

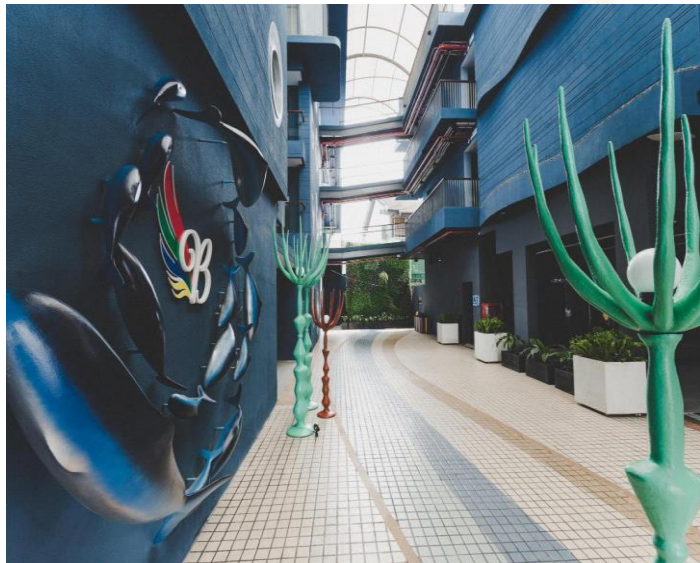
- Breakfast at the Hotel
- Check out from the Hotel
- Lunch at an Indian Restaurant
- Transfer to the Airport



Suggested Hotels

Beyond Patong 4 *

- Offering quality accommodations in the restaurants, beaches, shopping district of Phuket, Beyond Patong is a popular pick for both business and leisure travelers.
- With its convenient location, the property offers easy access to the city's must-see destinations.
- The facilities and services provided by Beyond Patong ensure a pleasant stay for guests.
- The property provides free Wi-Fi in all rooms, 24-hour security, daily housekeeping, taxi service, 24-hour front desk to ensure the greatest comfort.
- **No of Room:** 161 Rooms including suites
- **Distance from Airport:** 59 minutes



Venue Dimension & Seating chart

- Beyond Hall offers a wonderful venue for events of all kinds, right in the heart of Patong.
- Beyond Hall provides space for up to 200 persons.
- The latest meetings and presentation technology, full light and sound system, and Wi-Fi access are all included. Meeting and wedding packages are available.

Venue	Area in Sq. Mt	Theatre	Cluster
Beyond Hall	462	200	140



Suggested Hotels

Deevana Patong Resort & Spa 4 *

- Deevana Patong Resort & Spa located at the centre of all the actions in Phuket's most popular destination – Patong, the resort is just minutes away from the famous Bangla Road's nightlife, Jungceylon shopping and entertainment centre, and of course the wonderful golden sand of the glorious Patong Beach.
- The resort offers beautifully furnished rooms that are equipped with modern amenities include two outdoor swimming pools, two outdoor kid's pools, all day dining at the Dalah Cuisine Restaurant, 2 poolside bar, and a range of other facilities, the perfect setting for a relaxing holiday getaway.
- **No of Room:** 235 Rooms including suites
- **Distance from Airport:** 60 mins



Venue Dimension & Seating chart

- The Vanda Room is located next to the lobby at the Deluxe Wing of the resort and can be hired for meetings, conferences and banquets, in fact any style of event can be arranged by the professional event organisers.
- The seating can be set to suit your requirements from theatre style to board room meeting, with full catering services available.



Venue	Area in Sq. Mt	Theatre	Cluster
Vanda Banquet	110	80	40



Suggested Hotels

Novotel Phuket Resort 4 *

- The Novotel Phuket Resort spreads across 8 acres of lush tropical garden and is within walking distance to Patong Beach and the entertainment and shopping areas.
- The resort has beautifully furnished rooms with private balconies and spectacular views of the Andaman Sea and Patong.
- The resort is the only one of its kind in Phuket to offer three tier swimming pools with connecting waterfalls.
- Their convenient location, state-of-the-arts facilities and guest-centered services provide a memorable stay.
- **No of Room:** 215 Rooms including suites
- **Distance from Airport:** 56 mins



Venue Dimension & Seating chart

- Meeting at Novotel, making your meetings a success.
- Whatever type of meeting you are organizing, you can optimize the chances of its success by benefiting from the Novotel network.
- Our years of experience have let us build a great expertise in meetings organization.



Venue	Area in Sq. Mt	Theatre	Cluster
Siam A+B+C	321	350	250



Suggested Hotels

Amari Phuket 4 *

- If you're looking for the perfect getaway plan, this could be it. Located at the quiet end of Patong, Phuket's most popular beach, the **Amari Phuket** boasts numerous amenities beyond their comfortable rooms and extreme dedication to customer satisfaction.
- Guests will surely enjoy the Breeze Spa, two swimming pools, and fitness area. A renowned Italian restaurant overlooks the bay, making it a perfect location for those seeking a romantic mood.
- Also located on-site is a professional diving center offering PADI scuba diving trips for guests of all skill levels.
- **No of Room:** 380 Rooms including suites
- **Distance from Airport:** 1 Hr



Venue Dimension & Seating chart

- With unrivalled views of the Andaman Sea, a tranquil setting, excellent event spaces, modern audio visual facilities and a dedicated team of professional event planners to guide you through the arrangements, Amari Phuket is the ideal venue to host meetings, conferences, banquets or special events.

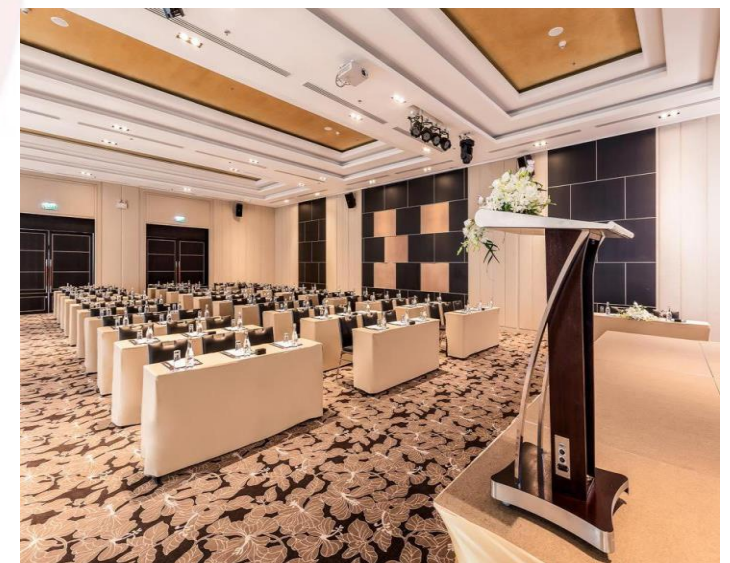
Venue	Area in Sq. Mt	Theatre	Cluster
Voyager Lounge	120	144	90
Idea Room	80	108	60



Suggested Hotels

Grand Mercure Phuket Patong 5 *

- Conveniently located in Phuket, Grand Mercure Phuket Patong is a great base from which to explore this vibrant city.
- Situated only 1 km from the city centre, guests are well located to enjoy the town's attractions and activities. With its convenient location, the hotel offers easy access to the city's must-see destinations.
- Take advantage of a wealth of unrivalled services and amenities at this Phuket hotel. The hotel offers access to a vast array of services, including 24-hour room service, free Wi-Fi in all rooms, 24-hour security, convenience store, daily housekeeping.
- **No of Room:** 314 Rooms including suites
- **Distance from Airport:** 41 mins



Venue Dimension & Seating chart

- Our ballroom is perfectly suited to host large social and business events for up to 200 guests, which includes Weddings and Anniversary parties. Modern Audio Visual equipment and Wi-Fi access are also available. The large meeting room offers natural lighting in a refined, intimate setting and is suitable for board meetings and product launches. Modern Audio Visual equipment and complimentary Wi-Fi access are also available. The medium sized meeting venue offers natural lighting and is suitable for smaller meetings and functions. Modern Audio Visual equipment and complimentary Wi-Fi access are available.



Venue	Area in Sq. Mt	Theatre	Cluster
Ballroom	265	250	160

Suggested Hotels

Mövenpick Myth Hotel Patong Phuket 5 *

- Designed for both business and leisure travel, Movenpick Hotel Myth Phuket Patong Resort is ideally situated in Patong, one of the city's most popular locales.
- From here, guests can make the most of all that the lively city has to offer. With its convenient location, the property offers easy access to the city's must-see destinations.
- At Movenpick Hotel Myth Phuket Patong Resort, the excellent service and superior facilities make for an unforgettable stay.
- **No of Room:** 235 Rooms including suites
- **Distance from Airport:** 58 mins



Venue Dimension & Seating chart

- Mövenpick Resort & Spa Karon Beach Phuket features the largest meeting and conference facilities in Phuket. The main ballroom can accommodate up to 800 delegates in a theatre or cocktail set-up. In total, the ballroom and seven breakout rooms can accommodate up to 1,260 delegates at one time. All meeting facilities are located on the same floor, which means your colleagues are never too far away from each other.



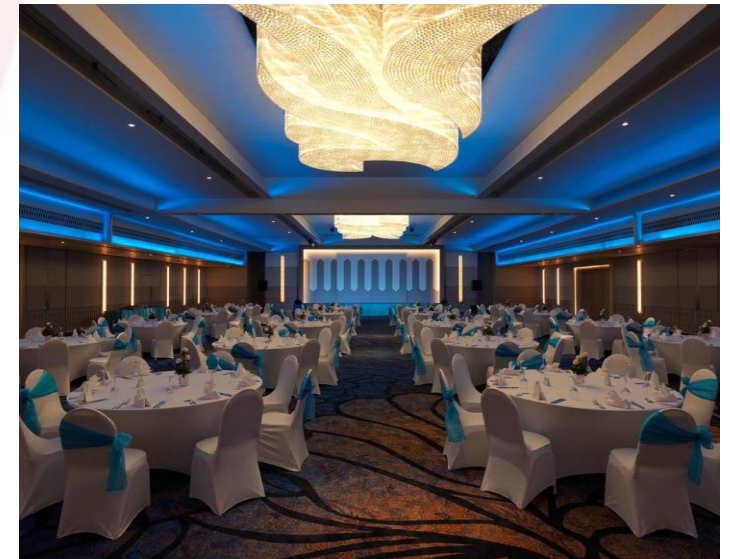
Venue	Area in Sq. Mt	Theatre	Cluster
Ballroom	265	250	160



Suggested Hotels

Le Meridien Phuket Beach Resort 4.5 *

- Like all other hotels from this prestigious chain, the Le Méridien Phuket Beach Resort offers unparalleled luxury along with the best room and hotel amenities.
- The location is conveniently near several tourist hotspots such as the Patong Beach and Phuket FantaSea.
- The hotel's secluded beach is perfect for avoiding the more overcrowded beaches and the constant interruption of beach vendors and the entire hotel is spread over 40 acres.
- Amenities on-site include 10 restaurants and bars, two massive swimming pools, a spa, discovery center for kids, and a private yacht, 'Born Free'.
- **No of Room:** 470 Rooms including suites
- **Distance from Airport:** 90 mins



Venue Dimension & Seating chart

- Our indoor and outdoor facilities feature views of the ocean, beaches, pools and tropical scenery
- Host a conference in our flexible pillarless ballroom and multiple breakout rooms
- Use LED projectors, free Wi-Fi and mirror-casting displays in our Phuket meeting spaces
- Entertain meeting attendees on our stunning Phuket beach, at Le Spa and at nearby attractions



Venue	Area in Sq. Mt	Theatre	Cluster
Ballroom	815	980	450



Suggested Hotels

JW Marriott Phuket Resort & Spa 5 *

- Set on the edge of the un-spoiled Mai Khao Beach and commanding views of the Andaman Sea, this multi-award winning resort is a sanctuary for the senses.
- JW Marriott Phuket Resort & Spa is set amongst a tropical landscape. Located on the northern part of the island, guests are just 15 kilometres from the airport in peaceful surroundings well away from the crowds.
- Phuket offers a wide range of activities, both on land and in sea, for an adventurous or a laid back holiday. Pick from diving, island hopping, elephant trekking, and spa treatments. Just as vast are the dining options, with 11 venues on-site and menu offerings ranging from steak to authentic Thai, 3 outdoor swimming pools, kid's club, and on-site sea turtle shelter.
- **No of Room:** 262 Rooms including suites
- **Distance from Airport:** 20 mins



Venue Dimension & Seating chart

- Our indoor and outdoor facilities feature views of the ocean, beaches, pools and tropical scenery
- Host a conference in our flexible pillarless ballroom and multiple breakout rooms
- Use LED projectors, free Wi-Fi and mirror-casting displays in our Phuket meeting spaces
- Entertain meeting attendees on our stunning Phuket beach, at Le Spa and at nearby attractions



Venue	Area in Sq. Mt	Theatre	Cluster
Mai Khao Ballroom	599	660	400



Indian Restaurants

Desi Tadka Indian Restaursnt



Indian Restaurants

Magic Masala Indian Restaurant



Flight Matrix

Phuket	Onward				Return			
Hubs	Air Line	Onward Time	Duration	Stops	Air Line	Return Time	Duration	Stops
Mumbai	Thai Airways 318/201	23:35-09:05	8H 00M	2H 05M Halt in Bangkok	Thai Airways 216/317	16:20-21:55	7H 05M	1H 10M Halt in Bangkok
Delhi	Thai Airways 316/201	23:30-09:05	8H 05M	2H 15M Halt in Bangkok	Thai Airways 218/331	19:00-02:15	8H 45M	2H 50M Halt at Bangkok
Chennai	Thai Airways 338/201	01:10-09:05	6H 25M	1H 30M Halt in Bangkok	Thai Airways- 218/337	19:00-00:01	6H 31M	1H 45M halt at Bangkok
Bangalore	Thai Airways 326/201	00:30-09:05	7H 05M	1H 45M Halt in Bangkok	Thai Airways 218/325	19:00-23:25	5H 55M	55M halt at bangkok
Hyderabad	Thai Airways 330/201	01:10-09:05	6H 25M	1H 25M Halt in Bangkok	Thai Airways- 218/329	19:00-00:10	6H 40M	1H 45M halt at Bangkok
Kolkata	Thai Airways 314/201	02:00-09:05	5H 35M	1H 30M Halt in Bangkok	Thai Airways 218/313	19:20-00:45	7H 15M	3H 20M halt at Bangkok

The average cost per person is INR 27000.

Flight cost are indicative and subject to availability at the time of confirmation.



Hotels	MOVENPICK 5*		NOVOTEL 4*	
Occupancy	Double	Single	Double	Single
Ground Total per person	31028	43908	26018	33808
Flights	25300	25300	25300	25300
Grand Total in INR	56328	69208	51318	59108

****All Costs are in INR****

Note:

- The above quote is for 50 Passengers travelling together.
- At the time no services are confirmed and the same is subject to availability.
- In case of any unprecedented hike in Hotel charges or other service charges, the same will be levied extra.
- Standard check in time is 3 pm & Standard check out time is 12 pm

Inclusion

- Accommodation in well appointed rooms in Phuket for 3 nights & 4 days.
- All Transfers on Private A/C coach.
- 02 bottles of water per person/day on coach
- 02 Trip Navigator representatives.
- Visa and travel Insurance for delegate below 59 years of age.
- **Meals:**
 - Day 01: Lunch and Dinner at an Indian Restaurant.
 - Day 02: Breakfast at the hotel, Indian lunch on the Island and Dinner at an Indian Restaurant
 - Day 03: Breakfast, Thai Lunch & Gala Dinner at Indian Restaurant.
 - Day 04: Breakfast at the Hotel.
- **Gala Dinner Inclusions:**
 - 2 Veg + 2 Non Veg Starters for 2 Hours.
 - Alcohol for 2 Hours <Black label, Vodka, Smirnoff, Beer>
 - DJ with Lights & Sound.
- **Sightseeing & entry fee to:**
 - Fanta Sea Show
 - Phi Phi island
 - White water rafting
 - Elephant trekking

Exclusion

- Any services not included in the above Package as well as Itinerary.
- Any entrance fees as per sightseeing mentioned in the itinerary.
- Early check-in & Early check-out.
- Any expenditure personal in nature.
- Any Internal transfer.
- Any VIP or personal transfers.
- Any kind of event setup.
- Tips and Gratuities
- GST as Applicable.



THANK YOU



For Enquiries:



+91 9167499293 / 4 / 1



contact@tripnavigator.in

www.tripnavigator.in

Trip Navigator Pvt. Ltd. - D308, Neelkanth Business Park Vidyavihar (W), Mumbai 400086